

The Bury - Locking

£699,950

🛏️ 4 🚿 4 🛋️ 3



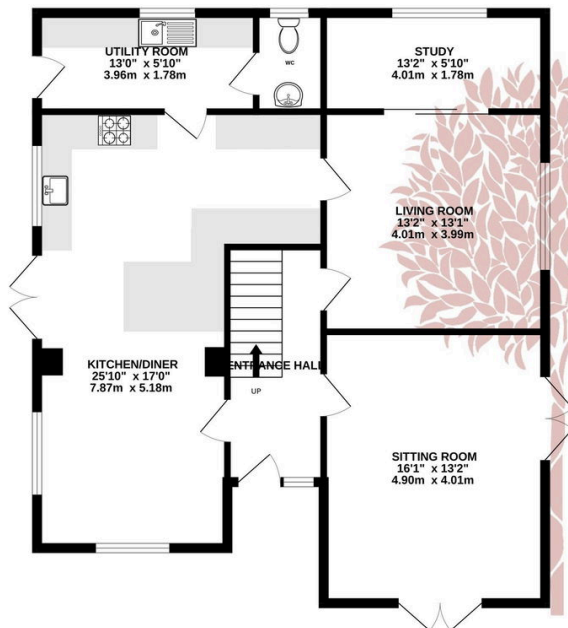
An executive detached family home situated in the sought after village of Locking. Property briefly comprises four double bedrooms, 3 ensuites, family bathroom, three reception rooms, kitchen/diner, utility and cloakroom.



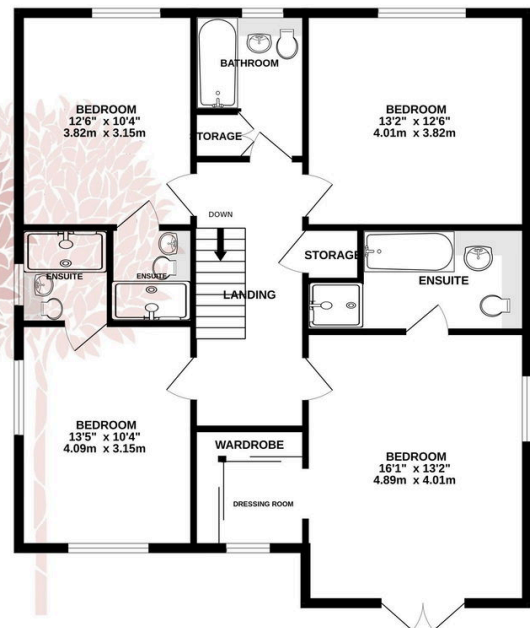
Key Features

- Executive Family Home
- 3 Ensuited & Dressing Room
- Electric gated entrance
- Sought After Village Location
- Viewing Highly Advised
- Four Double Bedrooms
- Three Reception Rooms
- Ample Off Road Parking
- Energy Performance Rating C
- Countryside Views

GROUND FLOOR
974 sq.ft. (90.4 sq.m.) approx.



1ST FLOOR
1001 sq.ft. (93.0 sq.m.) approx.



TOTAL FLOOR AREA: 1974 sq.ft. (183.4 sq.m.) approx.

Whilst every attempt has been made to ensure the accuracy of the floorplan contained here, measurements of doors, windows, rooms and any other items are approximate and no responsibility is taken for any error, omission or mis-statement. This plan is for illustrative purposes only and should be used as such by any prospective purchaser. The services, systems and appliances shown have not been tested and no guarantee as to their operability or efficiency can be given.

Made with Metropix ©2024

